

Specification sheet LX 3004

Parapet drainage

VARIO upstand spout with double pipe for bending on site

Emergency drainage

Gravity flow

Silent

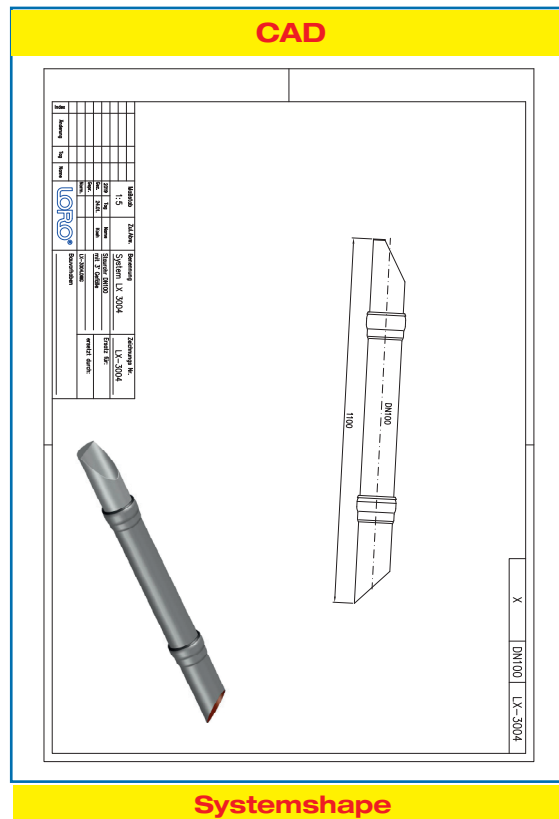
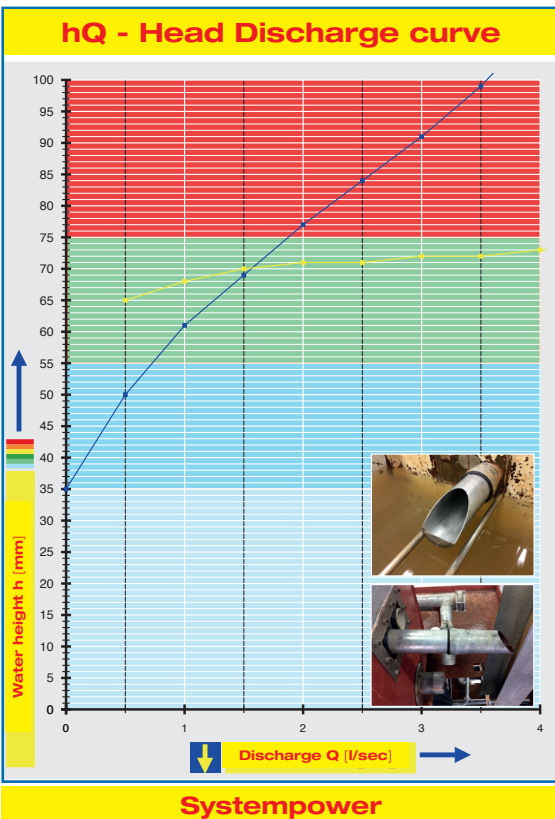


Note:
Measured runoff refers on a pipe.
Nominal drain is for double pipe doubled!

Discharge rate:	3.6 l/sec
Water height:	35 mm
Roof penetration:	0 mm
Diameter:	DN 100
LX-Number:	LX3004
Weir height:	-
Drain:	ventilated
Downpipe:	ventilated
Downpipe height:	-
Drainage:	on floor
Flange form:	Bonding flange

LX 3004 Piece list

- 1 x Art.-No. 13072.100X, LORO-X VARIO upstand Spout with double pipe
- 1 x Art.-No. 13214.100X, LORO-X Pitot tube
- 1 x Art.-No. 00911.100X, LORO-X Sealing element
- 1 x Art.-No. 00986.000X, LORO-X Lubricant



Water height	mm	15	20	25	30	35	40	45	50	55	60	65	70	75	80	85	90	95	100
Discharge	l/sec	-	-	-	-	-	-	-	0,5	0,7	0,9	1,2	1,6	1,8	2,2	2,6	2,9	3,2	3,6

LORO-X VARIO upstand spout with double pipe for bending on site DN 100

LX3004-20X

Drain Art.-No. 13072.100X
Weight: 4,1 kg

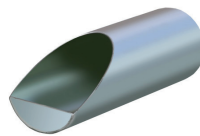
VARIO upstand double pipe
for bending on site



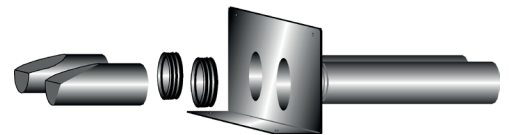
+

LORO-X Pitot tube

Art.-No. 13214.100X
Weight: 0,9 kg



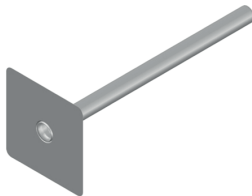
=



LX3004-20X

Drain Art.-No. 15072.100X
Weight 3,6 kg

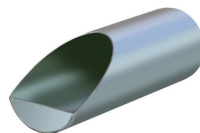
VARIO upstand
for bending on site



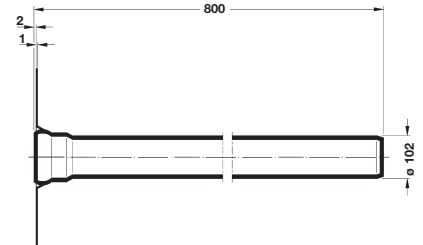
+

LORO-X Pitot tube

Art.-No. 13214.100X
Weight: 0,9 kg



=



Heat tracing: Lorowerk recommends to check all drains and pipes with regard to their frost-sensibility. Where necessary, these parts should be upgraded with heat tracing.